

MILLER, PAUL
Dept: MUSIC

MUSC-1131-003-01 AURAL SKILLS LAB, SEMESTER 2
Forms requested: 15 Returned: 15 College: Music

Comparison info for department, college/division, and campus is for your instructor group and the course level ONLY, using Spr 10, Fall 10, Spr 11, Fall 11, Spr 12 & Fall 12 data.
Group: OTH: Primary instructors not tenured/tenure-track Level: Lower division
Sections in comparisons: Dept: 185 College/Division: 185 Campus : 5222

Item No.	Your rating		Diff from Dept	Percentile in Campus	Lowest	Number of responses								SD	Profile of your avg. ratings (with 95% confidence bands)						Averages in	
	Avg.	Median				Dept	Campus	Lowest				Highest				1	2	3	4	5	6	Dept
						1	2	3	4	5	6	BL										
2 Personal interest before enrolled	4.3	4.0	-	0	26	60	0	0	4	5	3	3	0	1.1	-----*-----						4.9	4.1
3 Instr effectiveness encouraging interest	5.6	6.0	+	++	65	87	0	0	0	1	4	10	0	0.6	---*---						5.2	4.8
4 Instr availability for assistance	5.9	6.0	++	++	86	95	0	0	0	1	0	14	0	0.5	--*-						5.3	5.1
5 Intellectual challenge of course	5.5	6.0	+	+++	78	96	0	0	0	1	6	8	0	0.6	---*---						4.7	4.4
6 How much you learned in course	5.7	6.0	+	+++	82	96	0	0	0	1	3	11	0	0.6	---*---						5.0	4.7
7 Course overall	5.5	6.0	0	++	65	86	0	0	0	2	4	9	0	0.7	---*---						5.2	4.7
8 Instructor overall	5.9	6.0	+	++	80	95	0	0	0	0	1	14	0	0.3	-*						5.4	5.1
9 Instr respect/professional treatment	6.0	6.0	+	+	99	99	0	0	0	0	0	15	0	0.0	*						5.9	5.8
1 Hrs/week spent on course (incl class)	4-6	4-6	-	--	14	4	6	7	0	0	0	0	2	0.5	--*--						4-6	7-9

Hrs/week scale: 0-3=1, 4-6=2, 7-9=3, 10-12=4, 13-15=5, 16+=6

For more info, see below and www.colorado.edu/fcq/stats

Standard item correlations

	2	3	4	5	6	7	8	9
1	.3	-.2	-.3	.2	.4	.1	.3	
2		.7	.1	.2	.3	.5	.3	
3			.3	.0	.0	.6	.3	
4				.2	-.1	.2	-.1	
5					.2	.1	.2	
6						.7	.7	
7							.5	
8								

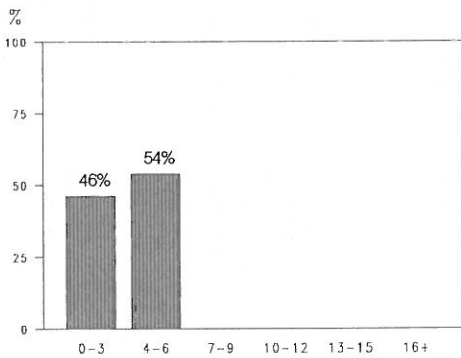
Correlation coefficients range from -1.0 to 1.0, and indicate the direction and strength of the relationship between two items.

Occasionally some (but not all) correlations will be missing. This can happen if all students give the same rating on a particular item.

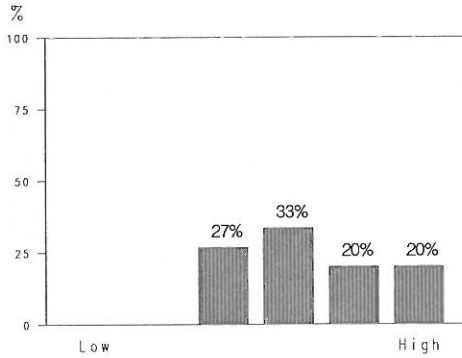
Median is the middle score when all ratings are rank-ordered. SD (standard deviation) is the DISAgreement among raters. Difference from the group avg. for Dept, Col/Div, and Campus ranges from --- to +++. 0 = negligible difference. Percentile = percentile of your average rating within a particular group: campus, college/division, department. ** Percentiles not reported for groups with under 10 sections. A confidence band indicates an interval within which we are 95% confident that the 'true' value of the average lies. See www.colorado.edu/fcq for details on all statistics, and for results from the last 7 years. Blank (BL) and non-applicable (NA) responses are tallied but excluded from averages.

SEE GRAPHS ON REVERSE SIDE

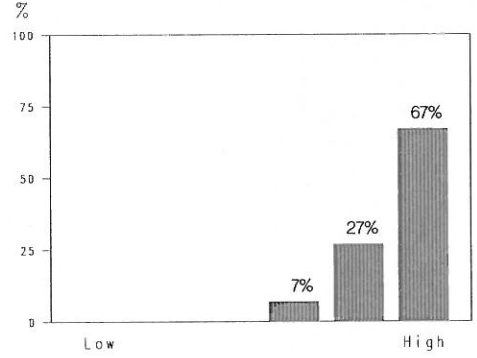
FCQ Results, Spring 2013, MUSC-1131-003 -- MILLER, PAUL



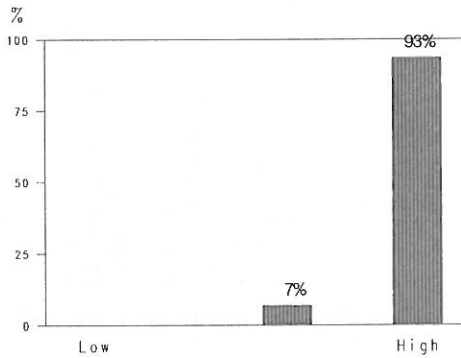
1: Hrs/Wk Spent on Course (Including Class)



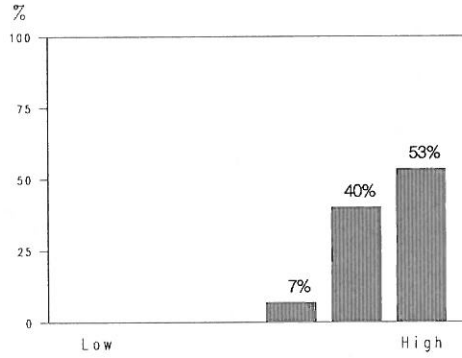
2: Prior Interest



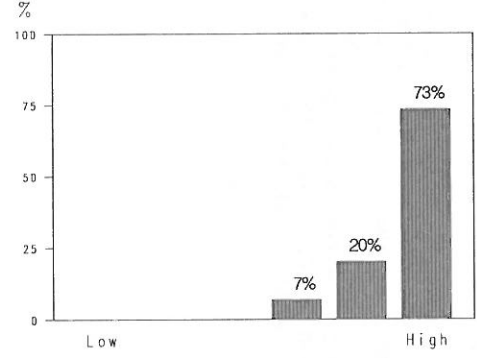
3: Instr Encourage Interest



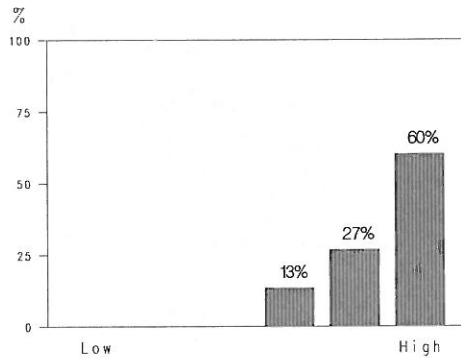
4: Instructor Avail for Ass't



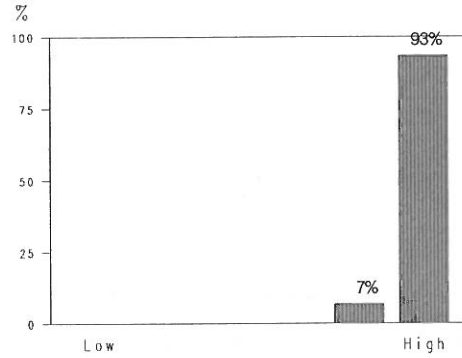
5: Intellectual Challenge



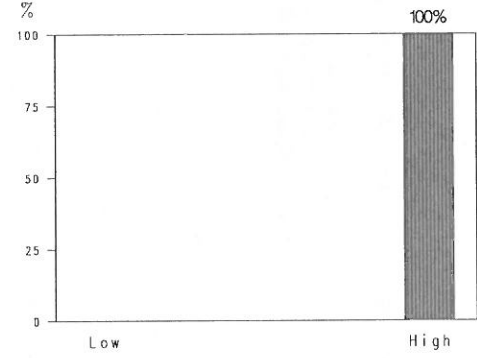
6: How Much Learned



7: Course Overall

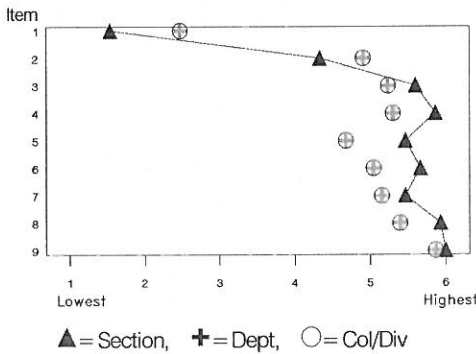


8: Instructor Overall



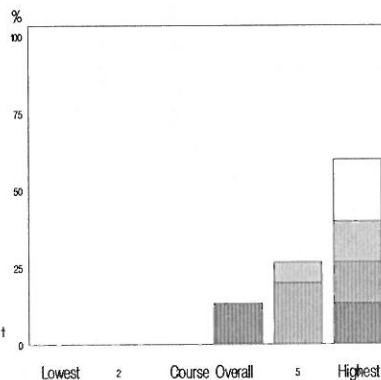
9: Instr Respect for Stdnts

Average Ratings Comparisons



▲ = Section, + = Dept, ○ = Col/Div

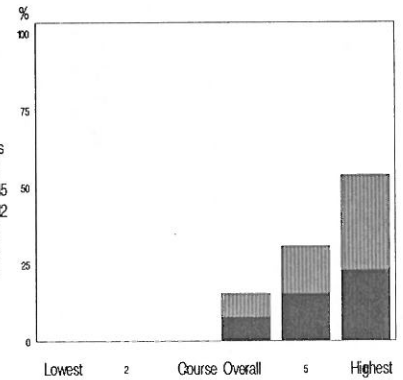
Relationship of "Course Overall" ratings to Personal Interest before Enrolled



Key

Interest
6
5
4
3
2
1

Hours
16 +
13-15
10-12
7-9
4-6
0-3



Comparison info for department, college/division, and campus is for your instructor group and the course level ONLY, using Spr 10, Fall 10, Spr 11, Fall 11, Spr 12 & Fall 12 data.
 Group: OTH: Primary instructors not tenured/tenure-track Level: Lower division
 Sections in comparisons: Dept: 185 College/Division: 185 Campus : 5222

Item No.	Your rating		Diff from		Percentile in		Number of responses								Profile of your avg. ratings (with 95% confidence bands)						Averages in		
	Avg.	Median	Dept	Campus	Dept	Campus	Lowest				Highest				Lowest			Highest			Dept	Campus	
							1	_2_	_3_	_4_	_5_	_6_	BL	SD	1	2	3	4	5	6			
2 Personal interest before enrolled	4.4	4.0	-	0	33	63	1	0	2	17	13	4	0	1.0					---			4.9	4.1
3 Instr effectiveness encouraging interest	5.5	6.0	0	+	63	82	0	0	2	2	8	25	0	0.8								5.2	4.8
4 Instr availability for assistance	5.8	6.0	+	++	81	93	0	0	0	0	7	30	0	0.4								5.3	5.1
5 Intellectual challenge of course	5.1	5.0	+	++	62	87	0	0	3	3	17	14	0	0.9								4.7	4.4
6 How much you learned in course	5.4	6.0	+	++	68	89	0	1	1	3	8	24	0	1.0								5.0	4.7
7 Course overall	5.5	6.0	+	++	68	89	0	0	1	0	14	22	0	0.6								5.2	4.7
8 Instructor overall	5.9	6.0	+	++	76	91	0	0	0	0	5	32	0	0.3								5.4	5.1
9 Instr respect/professional treatment	6.0	6.0	+	+	99	99	0	0	0	0	0	37	0	0.0							*	5.9	5.8
1 Hrs/week spent on course (incl class)	4-6	4-6	-	-	32	12	11	21	3	1	0	0	1	0.7								4-6	7-9

Hrs/week scale: 0-3=1, 4-6=2, 7-9=3, 10-12=4, 13-15=5, 16+=6

For more info, see below and www.colorado.edu/fcq/stats

Standard item correlations

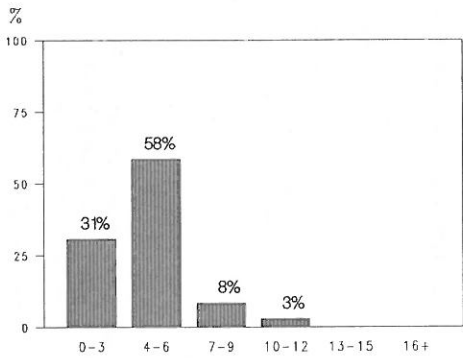
	2	3	4	5	6	7	8	9
1	.3	.2	.0	.4	.4	.3	.0	
2		.8	.0	.1	.2	.6	.1	
3			.1	.2	.5	.8	.4	
4				.2	.2	.2	.0	
5					.6	.5	.2	
6						.8	.3	
7							.5	
8								

Correlation coefficients range from -1.0 to 1.0, and indicate the direction and strength of the relationship between two items.
 Occasionally some (but not all) correlations will be missing. This can happen if all students give the same rating on a particular item.

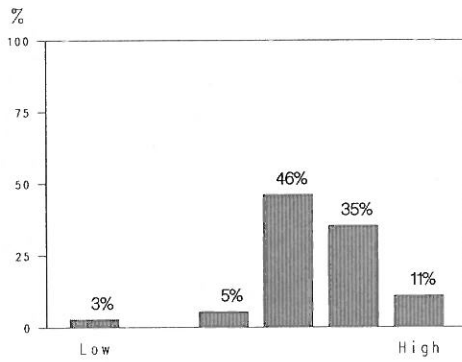
Median is the middle score when all ratings are rank-ordered. SD (standard deviation) is the DISagreement among raters. Difference from the group avg. for Dept, Col/Div, and Campus ranges from --- to +++. 0 = negligible difference. Percentile = percentile of your average rating within a particular group: campus, college/division, department. ** Percentiles not reported for groups with under 10 sections. A confidence band indicates an interval within which we are 95% confident that the 'true' value of the average lies. See www.colorado.edu/fcq for details on all statistics, and for results from the last 7 years. Blank (BL) and non-applicable (NA) responses are tallied but excluded from averages.

SEE GRAPHS ON REVERSE SIDE

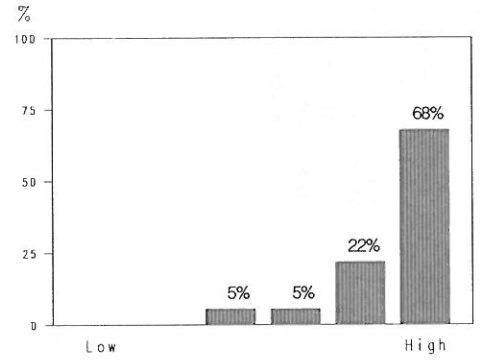
FCQ Results, Spring 2013, MUSC-1111-001 -- MILLER, PAUL



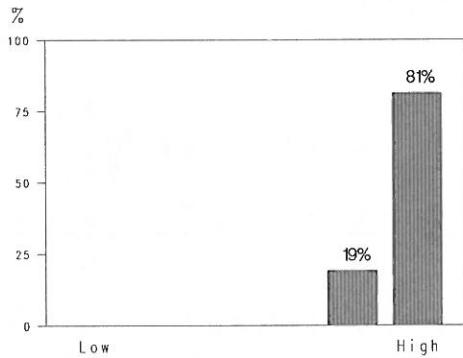
1: Hrs/Wk Spent on Course (Including Class)



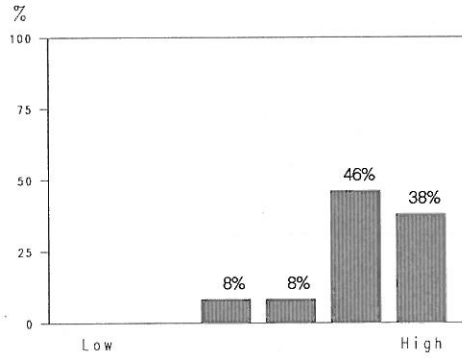
2: Prior Interest



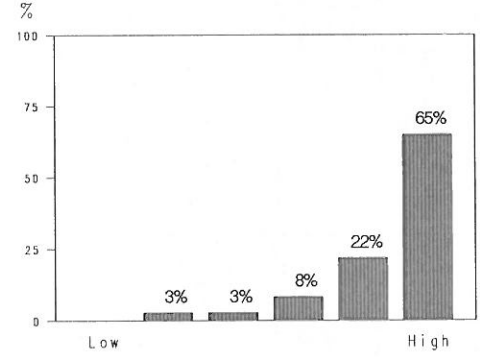
3: Instr Encourage Interest



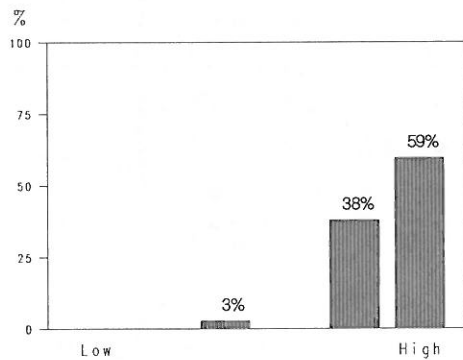
4: Instructor Avail for Ass't



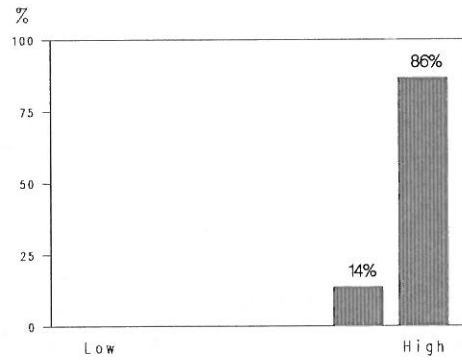
5: Intellectual Challenge



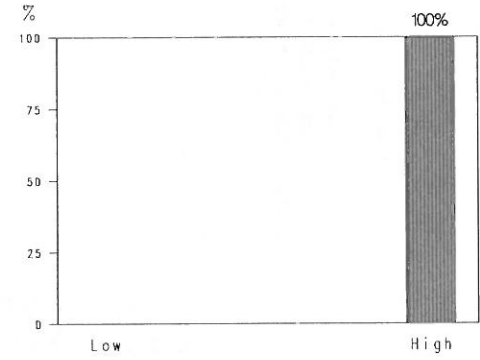
6: How Much Learned



7: Course Overall

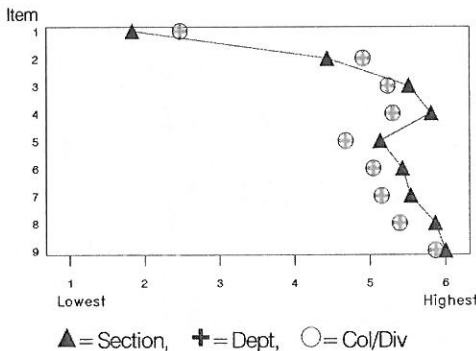


8: Instructor Overall

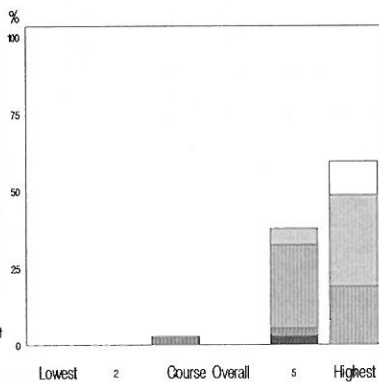


9: Instr Respect for Stdnts

Average Ratings Comparisons



Relationship of "Course Overall" ratings to Personal Interest before Enrolled



Relationship of "Course Overall" ratings to Hrs/Wk Spent on Course (Including Class)

